



Challenges and Opportunities of on-line Forestry Education at Kasetsart University, Thailand

Assistant Prof Damrong Pipatwattanakul

ffordap@ku.ac.th



**FACULTY OF FORESTRY
KASETSART UNIVERSITY**

KU

KASETSART
UNIVERSITY



FACULTY OF FORESTRY
KASETSART UNIVERSITY

Y 0bny ez

z 0bny ez GAT/PAT z 0bny ez

CURRICULUM/ current total students

- B.Sc. (Forestry) /1200
- M.Sc. (Forestry)/40
- M.Sc. (Forest biological science)/30
- M.Sc. (Forest management)/ 20
- M.Sc. (Parks, Recreation & Tourism)/ 20
- M.Sc. (Forest Resource and Environment Administration) /80
- Ph.D. (Forestry) /5
- Currently, BSc=1200, MS=190, PhD=5
Overseas = 15

KU

KASETSART
UNIVERSITY

Situation, 2019-present

Late 2019, the pandemic of COVID-19

Extensive disruptions in traditional teaching and learning approaches

Encountered difficulties in adequately preparing educators, students, and educational institutions to effectively cope with this transformative shift

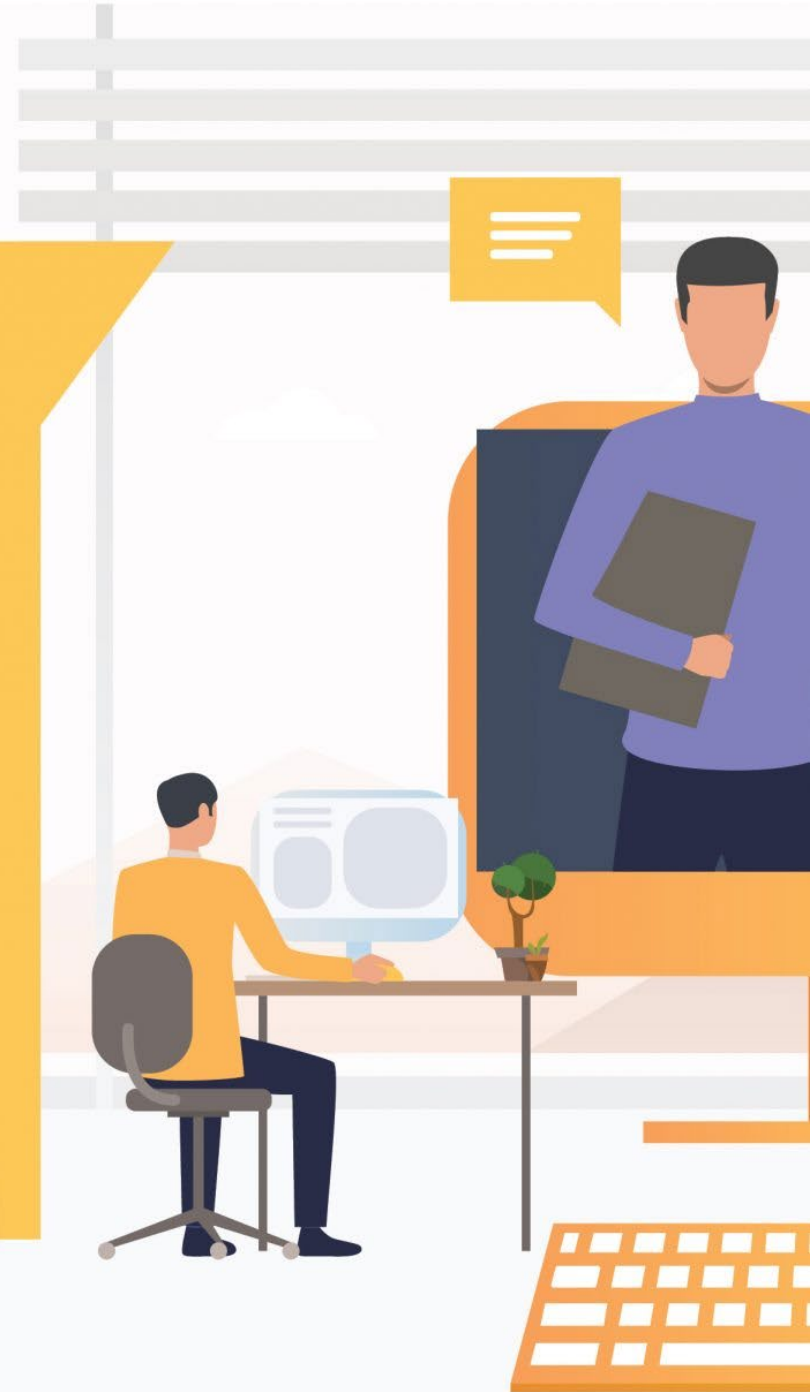
Start to introduce modern tech into teaching; VR



FACULTY OF FORESTRY
KASETSART UNIVERSITY

Do's & Don'ts of Online Teaching in 2022

[READ MORE](#)



How to Prepare for Online Teaching



How will you teach?



Synchronous
(Live lectures online)

or

Asynchronous
(Work at own pace)

How will students engage?



Self-Directed Learning

and/or

Discussion Forums

and/or

Small Groups

How will you communicate?



E-mail

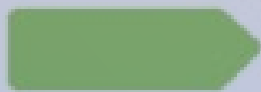
and/or

Announcements

and/or

Virtual Office Hours

How will you assess learning?



Discussion Forum Posts

and/or

Group work

and/or

Online Learning Objectives







SIGNIFICANT CHALLENGES

- Incompetence of some lecturers due to their limited technical proficiency
- Online teaching skills
- Constraints in using technology, which subsequently impacted the quality of audio and video during online session

TEACHER SUPPORTS

- Trainings on
 - Teaching management systems; PPT, MS Team, Google Classroom, Zoom, Cisco Webex, Moodle, Edu-Farm platform, etc.
 - Pedagogical training
 - Online course development
 - E-Quiz, online examination and Evaluation
- Audio visual support for teaching materials management



SIGNIFICANT CHALLENGES

- Difficulties in understanding the context of the lessons
 - Issues with unreliable internet connectivity
 - Struggles with time management
 - Concerns about online examinations
 - Decreased motivation
 - Challenges with assignment organization and evaluation
- Distraction posed by the home environment

KU

KASETSART
UNIVERSITY

SIGNIFICANT CHALLENGES

- Declining of student social activities
—> soft skill, communication skill
- Learning loss in forestry competency
- Economic effect on student family
- Learning culture



FACULTY OF FORESTRY
KASETSART UNIVERSITY

KU

KASETSART
UNIVERSITY

STUDENT SUPPORTS

- Support internet package to all students
- Provided Covid-19 insurance to all staffs and students
- Special loan without interest for students to buy IT devices
- 10% reduction of tuition fee in academic year 2020
- Special wages for students who partially work for faculty



FACULTY OF FORESTRY
KASETSART UNIVERSITY

KU

KASETSART
UNIVERSITY

What should HEIs do?

- Provide opportunity to implement essential pedagogical review
- Fulfill learning gap in forestry competency in the AP-region, e.g. students and anyone should be allowed to attend up-skill trainings organized by KUFF and others HEIs in AP-FECM.
- Develop lifelong learning strategies that do not rely solely on a single technology but encompass a diverse range of technological tools and open for all from anywhere in the region.



FACULTY OF FORESTRY
KASETSART UNIVERSITY

KU

**KASETSART
UNIVERSITY**

Introducing VR tech in teaching

https://www.canva.com/design/DAluEO5GdY/7QY0FMwD4wEVHrPNjKB1PA/watch?utm_content=DAluEO5GdY&utm_campaign=designshare&utm_medium=link&utm_source=publishsharelink



**FACULTY OF FORESTRY
KASETSART UNIVERSITY**

KU

KASETSART
UNIVERSITY



THANK YOU FOR YOUR ATTENTION



FACULTY OF FORESTRY
KASETSART UNIVERSITY

Y ๖๖๖ ๕๕
๕๕๕ ๕๕๕ ๕๕๕๕ GAT/PAT ๕๕๕ ๕